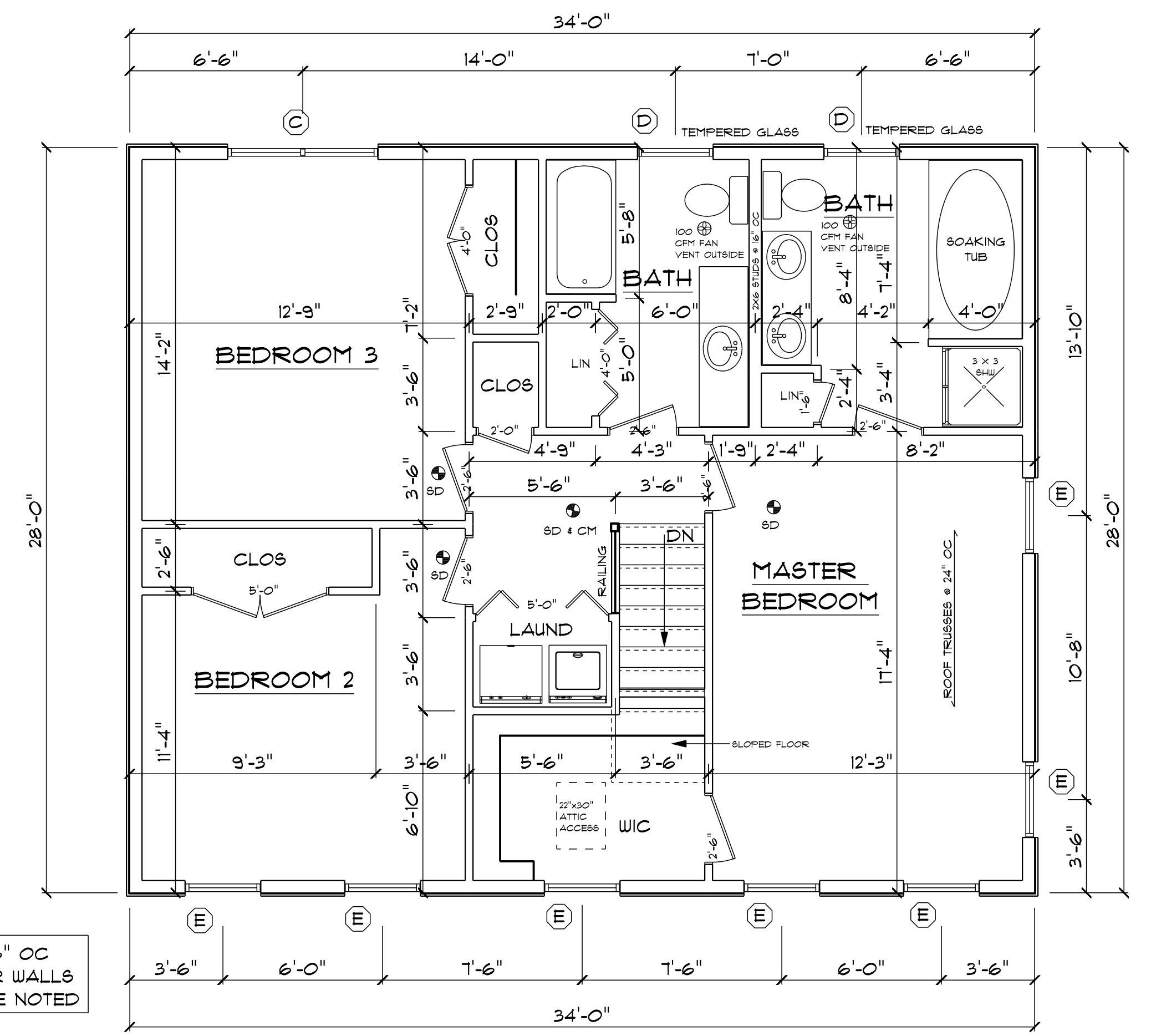
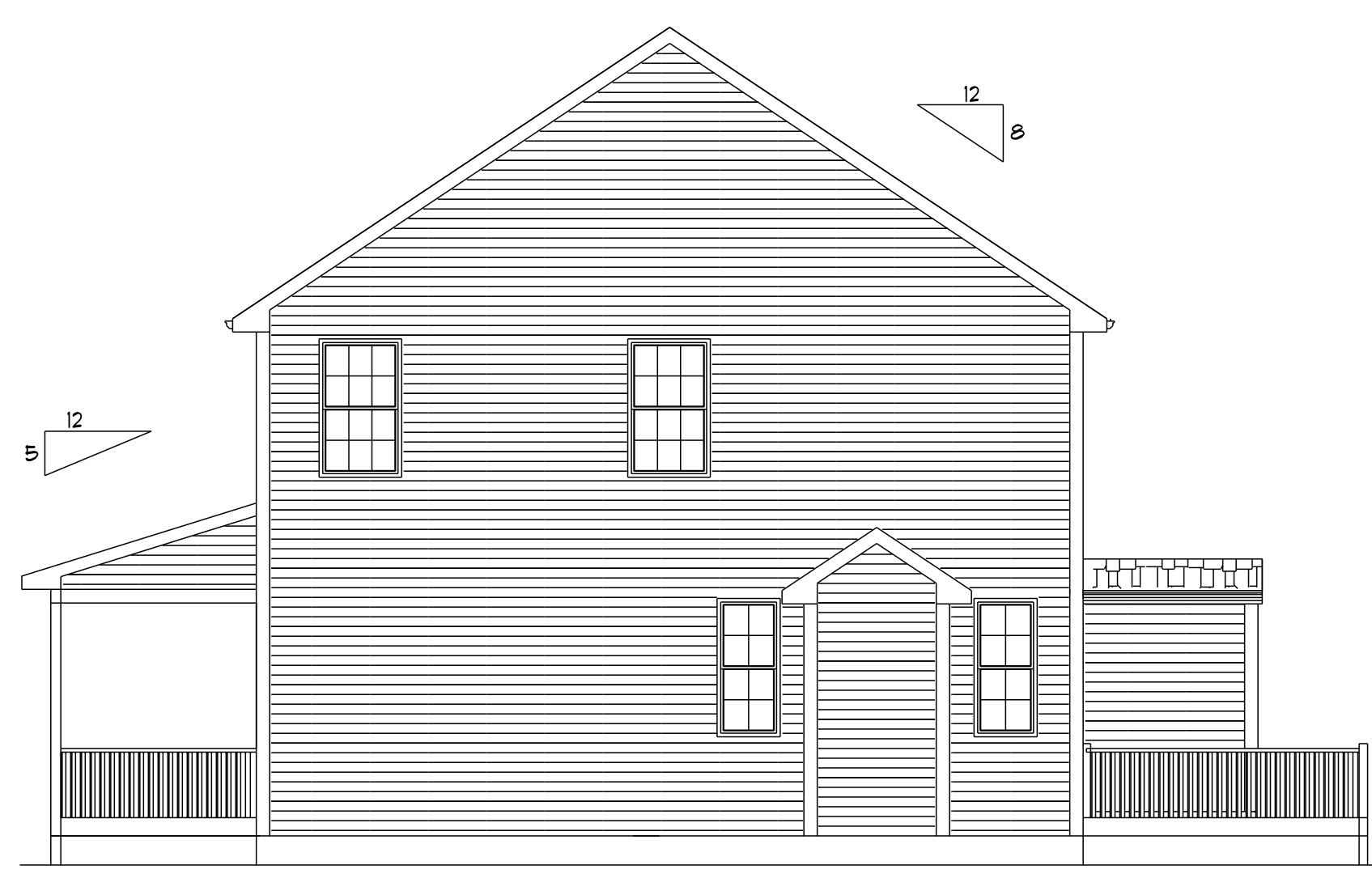


2x6 STUDS @ 16" OC AT ALL EXTERIOR WALLS UNLESS OTHERWISE NOTED



FRONT ELEVATION 3/16"=1'-0"



RIGHT SIDE ELEVATION 3/16"=1'-0"

WINDOW SCHEDULE						
TYPICAL HEADERS (2) 2" X 10" TYPICAL HEADER HEIGHT = 6'-10"						
NOTE: ALL LUMBER SPECIES FOR HEADERS, JOISTS AND BEAMS TO BE KD SPRUCE NO. 2 OR BETTER. EXCEPTIONS ARE NOTED ON PLANS.						
ALL LOADS FOR FLOOR JOISTS, RAFTERS, HEADERS AND BEAMS ARE BASED ON THE FOLLOWING:						
FLOOR JOISTS LIVING AREAS: 40 PSF LIVE LOAD 30 PSF DEAD LOAD						
FLOOR JOISTS SLEEPING AREAS: 30 PSF LIVE LOAD 30 PSF DEAD LOAD						
MANUFACTURER (OR EQUIVALENT): HARVEY WINDOWS MIN. U-FACTOR .21						
UNIT	ROUGH OPENING	TYPE	QTY	AREA / BILL FEE	NET AREA	DESIGN PRESSURE
A	2'-0" X 5'-6" 1/2"	DH	4	18.0 / 1.5'	5.86	21
B	2'-0" X 4'-9" 1/2"	DH	2	10.28 / 2.1'	3.68	21
C	5'-6" 1/4" X 4'-9" 1/2"	DH MFL	2	28.0 / 2.1'	8.03 EA	21
D	2'-0" X 3'-6" 1/2"	DH	4	18.0 / 3.5'	3.51	21
E	2'-0" X 4'-9" 1/2"	DH	6	18.0 / 2.1'	9.03	21
DOOR SCHEDULE						
TYPICAL HEADERS (2) 2" X 10" TYPICAL HEADER HEIGHT = 6'-10"						
NOTE: ALL LUMBER SPECIES FOR HEADERS, JOISTS AND BEAMS TO BE KD SPRUCE NO. 2 OR BETTER. EXCEPTIONS ARE NOTED ON PLANS.						
INTERIOR AND EXTERIOR DOOR SIZES ARE NOTED ON PLANS.						
INTERIOR DOORS: 6'-0" HIGH (TYPICAL)						
EXTERIOR DOORS: 6'-10" HIGH (TYPICAL)						
MINIMUM DESIGN PRESSURE FOR SLIDING / FRENCH DOORS						
30						
DESIGN PRESSURE						
WIND ZONE: 100 MPH				DESIGN PRESSURE		
WIND EXPOSURE: B				PRESSURE PROVIDED		
HEIGHT (AVERAGE): 20'-0"				18.0 / -18.5		30
PRESSURE ZONE: 4 + 5						

THESE DRAWINGS ARE IN ACCORDANCE WITH THE FOLLOWING DESIGN CRITERIA.

- RIBSIC - 2 - 2013
- WIND DESIGN: ZONE 1 (100 MPH)
- LOAD DESIGN: 40 PSF LIVING AREA LOADS
30 PSF SLEEPING AREA LOADS
20 PSF DEAD LOADS
20 PSF ATTIC LOADS
60 PSF EXTERIOR DECK LOADS
30 PSF SNOW LOADS
- FROST DEPTH: MINIMUM 3'-6" DEEP
- CLIMATE ZONE: 5A
- CONSTRUCTION TYPE: 5B
- OCCUPANCY TYPE: R3
- BUILDING HEIGHT: (MAXIMUM 35'-0") MEASURED FROM TOP OF FOUNDATION TO RIDGE
- ALL INSULATION IN EXTERIOR WALLS ARE BASED ON THE MINIMUMS AS PER THE PRESCRIPTIVE METHOD OF TABLE N102.1.2 OF THE ENERGY CONSERVATION CODES.

DLR DIMENSIONS, INC.
RESIDENTIAL DESIGNERS

612 GREENWICH AVENUE PHOENIX, AZ 85018
WARWICK, RHODE ISLAND 02886 PHONE: (401) 738-3156
EMAIL: dlrdimensions@gmail.com

28 X 34 COLONIAL
LOT 5 VERIDIAN ESTATES, ATTELEBORO, MA

SCALE NOTED APPROVED
DATE Tuesday, March 07, 2011 DRAWN BY DRR
REVISION

PREPARED FOR:
COLUCH ORGANIZATION, LLC

4931
1 OF 2